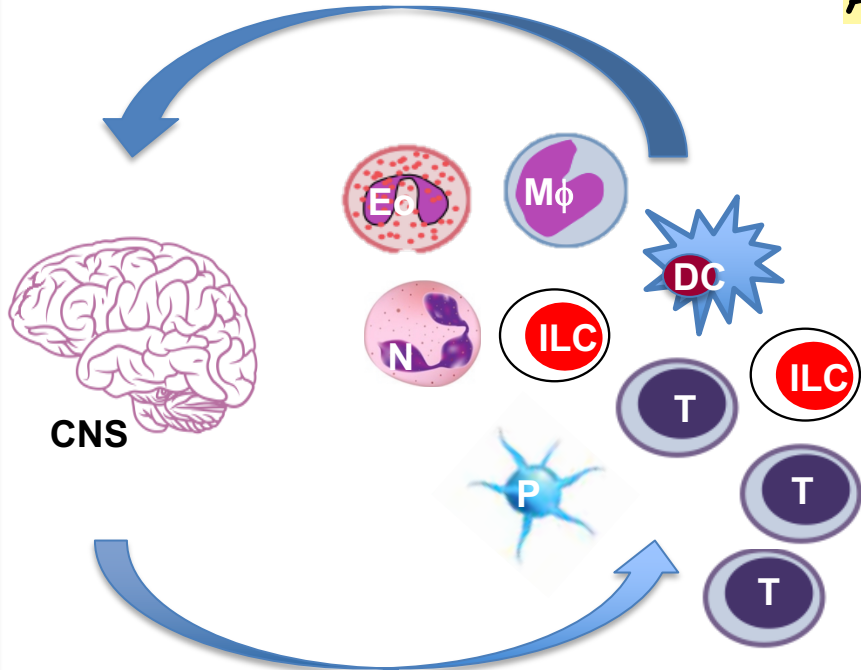


Immune Regulation of CNS



CNS

CNS Regulation of Immunity

Neuropathologies
Autoimmune Diseases

Manipulate lymphocyte crosstalk by bioengineered ligands, neurotransmitter agonists or antagonists

“Neuroimmunotherapy”

- Optimized
- Immune subtype
 - Homing
 - Activation
 - Cytokine milieu
 - Proliferation
 - Survival
 - Effector function

Treat TILs *in vitro* before adoptive transfer

The illustration shows a petri dish containing yellow cells, with a pipette dispensing a pink liquid into it, representing the *in vitro* treatment of tumor-infiltrating lymphocytes (TILs).

Inject into tumors *in situ*

The illustration shows a hand holding a syringe and injecting a liquid into a yellow, irregularly shaped mass labeled 'Tumor', representing the *in situ* injection of treated TILs into the tumor.